



MuteClip[®]

Product Data
Performance Data

MuteClip[®] Product Data

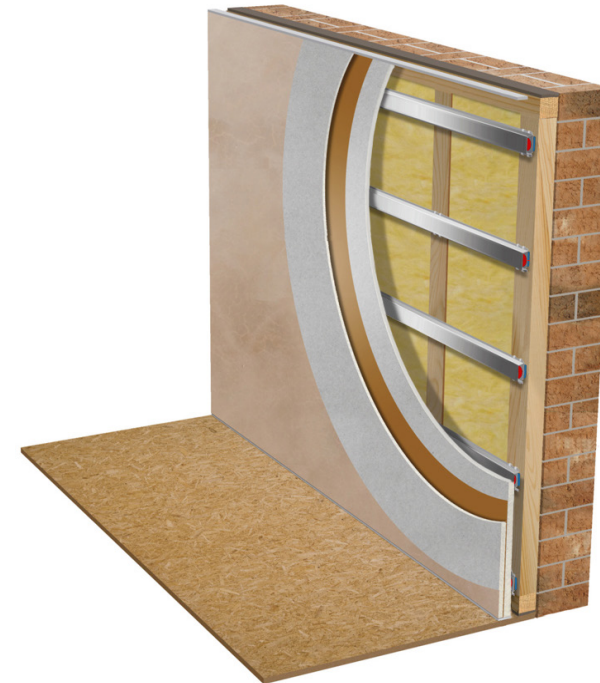
Description: MuteClip is unique in its design with its dual density rubber polymers that are designed and assembled to improve noise reduction over a broad range of frequencies whilst remaining stable and consistent with each MuteClip. Requiring only a single fixing, the MuteClip looks to minimize the points of contact with both wall and ceiling partitions.

Dimensions: 75mm x 35mm x 29mm

Maximum Load: 16 kg (36 lb) per each MuteClip

Temperature Stability: -35°C to +100°C

Features and Benefits: Dual density rubber isolator.
Dramatically reduces airborne and impact noise as a high performing, slimline acoustic system.
Only one fixing per MuteClip allows for easy installation.
Can be used on metal, wooden, brick and concrete structures.
Reduced points of contact to help de-couple ceiling and wall systems.
Significantly improves sound control in both high and low frequencies
Significant improvement over standard resilient bars in both performance and fitting.



MuteClip® Performance Data

Treated Structure: Impact Sound Pressure Level according to ISO 717-2
Receiving Room Volume: 20m³

Original Wall Build-Up: 15 mm Acoustic Plasterboard (12.5 kg/m²)
Stud Wall 95 mm
75 mm RW3 Rockwool (4.5 kg/m²)
15 mm Acoustic Plasterboard (12.5 kg/m²)

Additional Build-Up: MuteClip and MuteClip Channel

Acoustic Performance: Original Wall Build-Up: R_w (C;Ctr) = 45 dB (-2; -7)
Additional Build-Up: R_w (C;Ctr) = 54 dB (-4; -11)

Wall: $D_{nT,w} + C_{tr} = 70$ dB

Ceiling: $D_{nT,w} + C_{tr} = 54$ dB

$L'_{nT,w} = 53$ db

Performance will vary with different floor make-up. Rating in accordance to ISO 717-2

Hz	1/3
100	61.9
125	60.5
160	64.9
200	62.3
250	66.9
315	65.3
400	68.9
500	68.3
630	69.8
800	73.7
1000	77.2
1250	75.2
1600	73.7
2000	75.8
2500	78.5
3150	79.4
4000	
5000	

Acoustic Test Report

