



Note[™]

Product Data

Performance Data

Colours

Maintenance and Cleaning Guide

Note™ Product Data

Description: Note™ is a high performing acoustic fibreboard with absorptive qualities. Its lightweight and semi-rigid characteristics allow it to be used to create a wide range of acoustic solutions, where design and aesthetics are vital. It is available in a wide range of colours and has a solid colour throughout, Note also contains a minimum of 65% recycled Polyester materials.

Dimensions: Available in 12mm and 24mm
12mm x 1225mm x 2800mm
24mm x 1200mm x 2700mm

Mass: 12mm - 2.4 kg m²
24mm - 4.8 kg m²

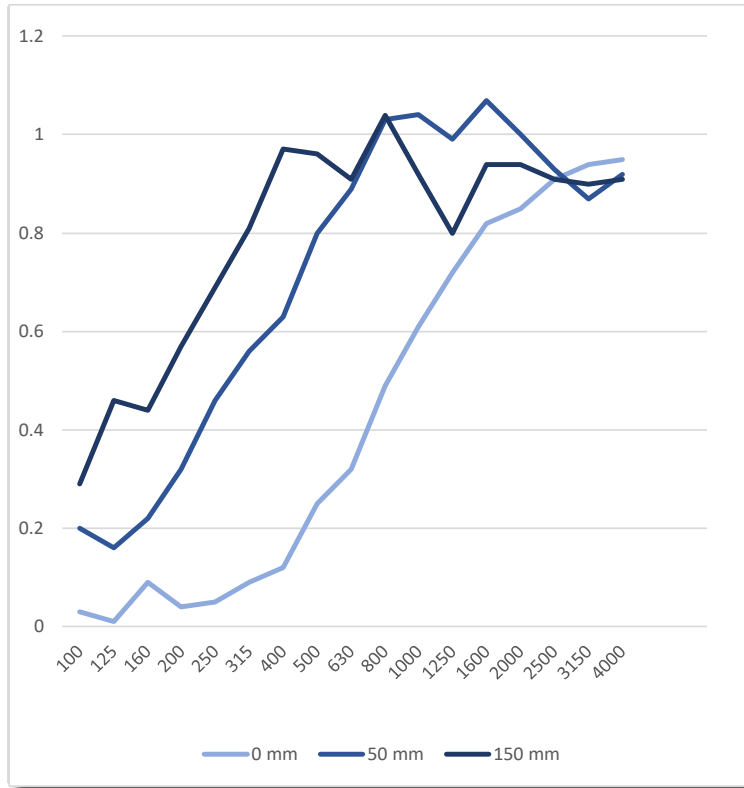
Fire Rating: EN 13501-1:2007+A1:2009.
B - s1, d0

Features and Benefits: Available in a wide range of colours
Incredible potential for bespoke designs
Can create strong stable structures
Lightweight
Highly durable
Composition: 100% Polyester
Minimum of 65% recycled content
Can be digitally printed on

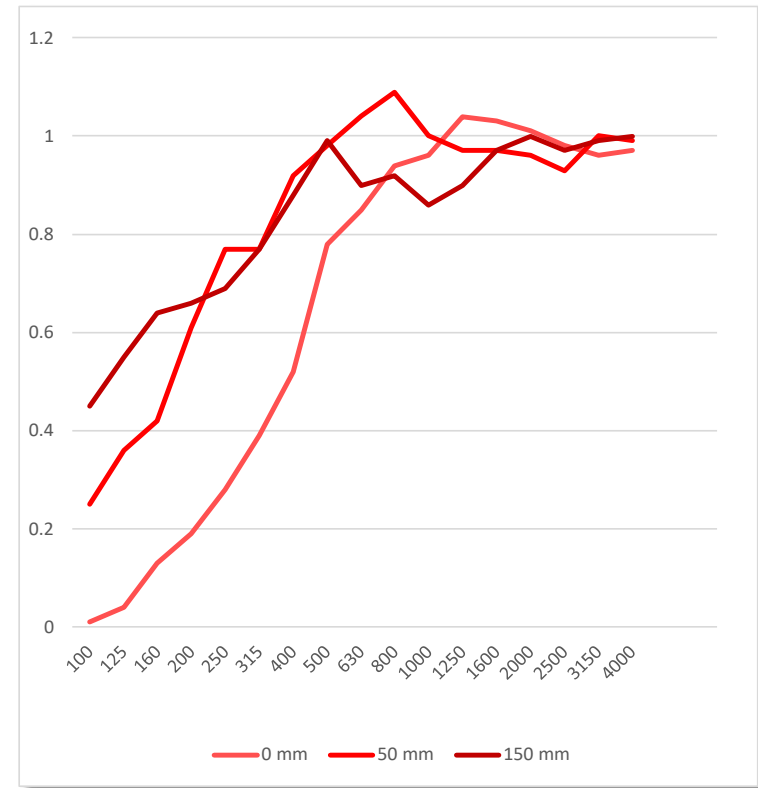


Note™ Performance Data

Acoustic Test Report
Note 12 mm



Acoustic Test Report
Note 24 mm



| Freq | 100 | 125 | 160 | 200 | 250 | 315 | 400 | 500 | 630 | 800 | 1000 | 1250 | 1600 | 2000 | 2500 | 3150 | 4000 | NRC |
|--------|------|------|------|------|------|------|------|------|------|------|------|------|------|------|------|------|------|------|
| 0 mm | 0.03 | 0.01 | 0.09 | 0.04 | 0.05 | 0.09 | 0.12 | 0.25 | 0.32 | 0.49 | 0.61 | 0.72 | 0.82 | 0.85 | 0.91 | 0.94 | 0.95 | 0.45 |
| 50 mm | 0.2 | 0.16 | 0.22 | 0.32 | 0.46 | 0.56 | 0.63 | 0.8 | 0.89 | 1.03 | 1.04 | 0.99 | 1.07 | 1.00 | 0.93 | 0.87 | 0.92 | 0.8 |
| 150 mm | 0.29 | 0.46 | 0.44 | 0.57 | 0.69 | 0.81 | 0.97 | 0.96 | 0.91 | 1.04 | 0.92 | 0.8 | 0.94 | 0.94 | 0.91 | 0.9 | 0.91 | 0.85 |
| 0 mm | 0.01 | 0.04 | 0.13 | 0.19 | 0.28 | 0.39 | 0.52 | 0.78 | 0.85 | 0.94 | 0.96 | 1.04 | 1.03 | 1.01 | 0.98 | 0.96 | 0.97 | 0.75 |
| 50 mm | 0.25 | 0.36 | 0.42 | 0.61 | 0.77 | 0.77 | 0.92 | 0.98 | 1.04 | 1.09 | 1.00 | 0.97 | 0.97 | 0.96 | 0.93 | 1.00 | 0.99 | 0.9 |
| 150 mm | 0.45 | 0.55 | 0.64 | 0.66 | 0.69 | 0.77 | 0.88 | 0.99 | 0.90 | 0.92 | 0.86 | 0.9 | 0.97 | 1.00 | 0.97 | 0.99 | 1.00 | 0.9 |

Note™ Colours



Black



Charcoal



Grey



Marble



White



Red



Orange



Yellow



Sand



Shell



Green



Aqua



Navy



Sky

Note™ Maintenance and Cleaning Guide

| Stain | Treatment |
|---------------------|---------------|
| Blood | A C |
| Burn | K |
| Chewing Gum | B C D I |
| Chocolate | B C D |
| Crayon/Colours | B C D |
| Drinks | A C |
| Dust/Dirt | Vacuum J or C |
| Excrement | B C |
| Grass | C |
| Ink (ballpoint) | D E |
| Ink (fountain) | A C |
| Lipstick | B C D E |
| Mildew | C |
| Milk | A E |
| Mud | B C |
| Nail Polish | A G |
| Oils and Grease | B C D |
| Paint (water based) | A C F |
| Paint (oil based) | A C D H |
| Sauces | B C D |
| Shoe Polish | B C D |
| Urine | A C |
| Vomit | A C D |
| Wine | A add salt C |

Due to the high durability of our Note™ products they require minimal maintenance to maintain their aesthetic. To prevent dust build up, lightly vacuum on a regular basis. Most marks can be cleaned using a mild detergent solution followed by rinsing and blotting. Stains should be treated according to the charts below.

Prior to proceeding with the proposed cleaning method, apply to a concealed section of the material to ensure it will not affect the final finish. Spot clean only and avoid severe abrasion. Use a vacuum to restore pile, but *do not* use a hard brush.

Please Note: We do not recommend using solvent-based solutions on Note™ products.

| Key | |
|----------|---|
| A | Remove excess with Sponge or Cloth. |
| B | Remove excess with a knife edge or appropriate apparatus. |
| C | Using a solution of carpet shampoo, sponge in a circular motion working from the outside in (to avoid spreading the stain). Next sponge with clean warm water, mopping the excess moisture with a clean dry cloth. Once dry brush gently with a soft brush. If any stain remains, sponge with a solution of one part household bleach to six parts water, rinsing thoroughly after. |
| D | Using household dry cleaning fluid (use sparingly to avoid any adverse effects) lightly sponge and blot dry. |
| E | Using methalated spirits sponge and blot dry. |
| F | Lubricate the stain using petroleum jelly or glycerine. |
| G | Apply nail polish remover (ensure it does not include lanolin or is of a greasy nature). |
| H | Sponge with turpentine (or substitute). |
| I | Using ice cubes freeze the stain and scrape away excess while cold. |
| J | Clean using a extractive carpet cleaner. |
| K | Remove damaged portion with a circular cutter and then re-glue new piece into place. |